

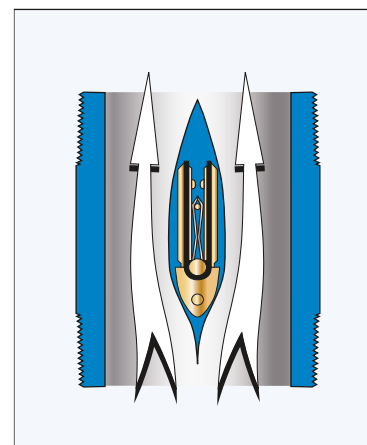


Check Valve

Full Port, Lowest Pressure Drop

Full Port Check Valves provide more flow and lower pressure drops than conventional check valves. Our elastomer hinge check valve design takes performance to an entirely new level by eliminating the restrictive valve seat and substantially increasing the valve's open area and flow coefficient (Cv). The resulting flow is more laminar, with lower pressure loss and reduced turbulence. It also improves valve life and reliability. Keeping pressure loss low is always important, but particularly so when handling low pressure air and gases.

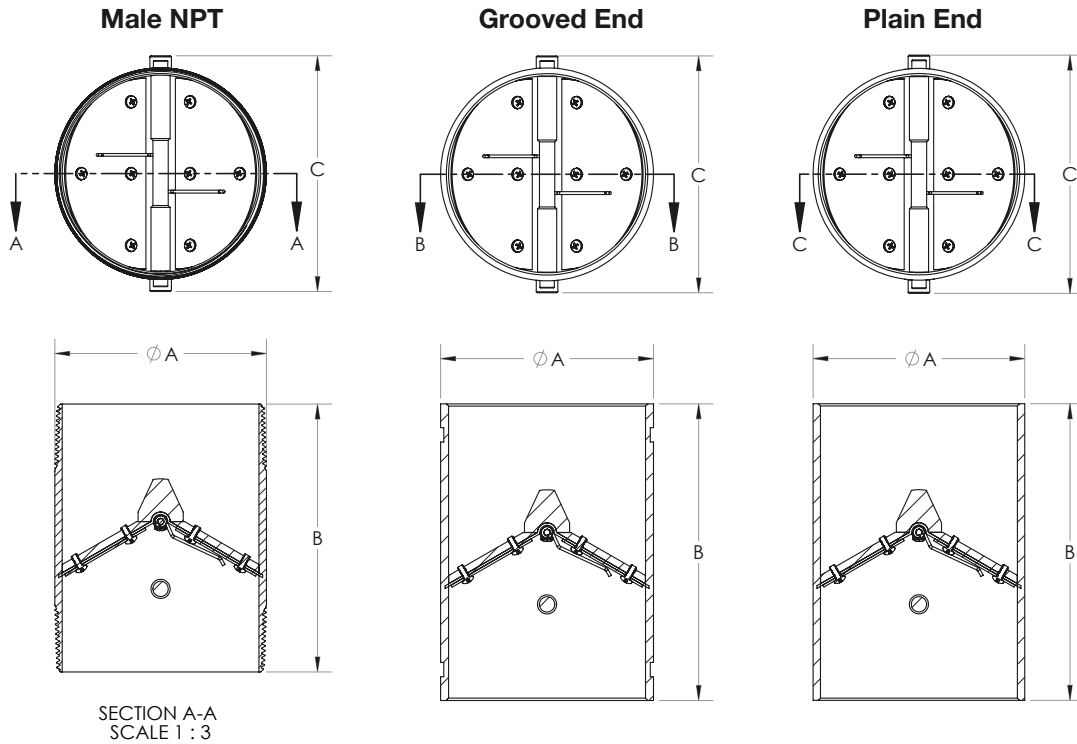
Dual disc check valves are the clear choice for many piping engineers because of their proven reliability, ease of installation and low ΔP . Now, they are available in a full port design that dramatically improves performance. They are ideal for application in vacuum pumps, compressed air and gas systems as well as in water systems where low head loss and elimination of water hammer are desirable.



*Open flow path, low ΔP ,
more laminar flow*



Valve Dimensions



Male NPT Body (MNPT)

Size	A	B	C
1	1.30	3.50	1.60
1 ¼	1.65	3.50	2.00
1 ½	1.90	4.00	2.30
2	2.35	4.00	2.80
2 ½	2.85	5.00	3.30
3	3.45	5.50	3.90
4	4.45	6.00	4.90
5	5.55	7.00	6.10
6	6.60	8.00	7.10
8	8.60	10.00	9.50
10	10.75	12.00	11.50
12	12.75	14.00	13.80

Grooved & Plain End Body

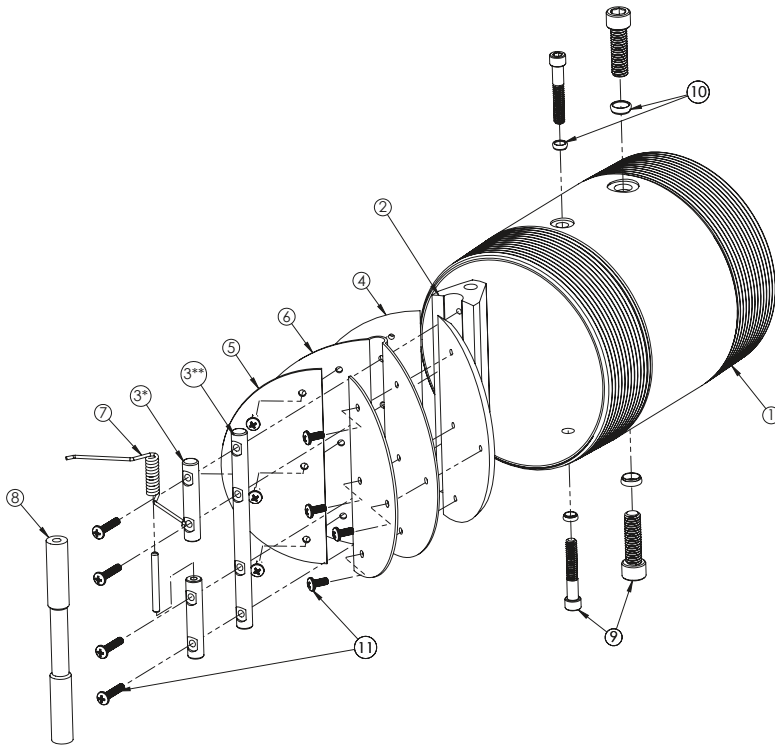
Size	A	B	C
1	1.30	5.75	1.60
1 ¼	1.65	5.75	2.00
1 ½	1.90	5.75	2.30
2	2.35	5.75	2.80
2 ½	2.85	5.75	3.30
3	3.45	5.75	3.90
4	4.45	6.75	4.90
5	5.55	7.75	6.10
6	6.60	8.75	7.10
8	8.60	10.75	9.50
10	10.75	12.75	11.50
12	12.75	14.75	13.80

All dimensions in inches





Exploded View



Part No.	Part Description
1	Body (MNPT Shown)
2	Wing Support
3*	Spring Pin
3**	Wing Pin
4	Disc
5	Back-up Disc
6	Elastomer Seal
7	Spring
8	Limiter
9	WS/LM Fastener
10	Sealing Washer
11	Internal Fasteners

Note: If valve is supplied with optional spring, use part number 3 (Spring Pin), otherwise use 3** (Wing Pin).*

