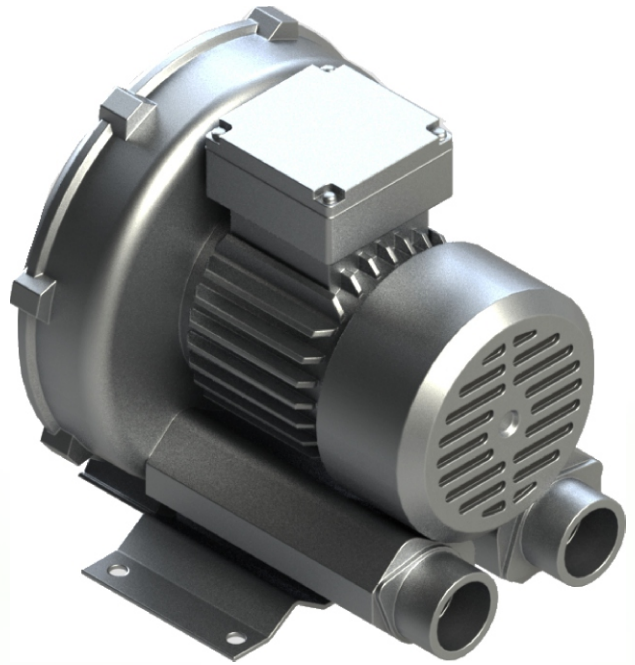


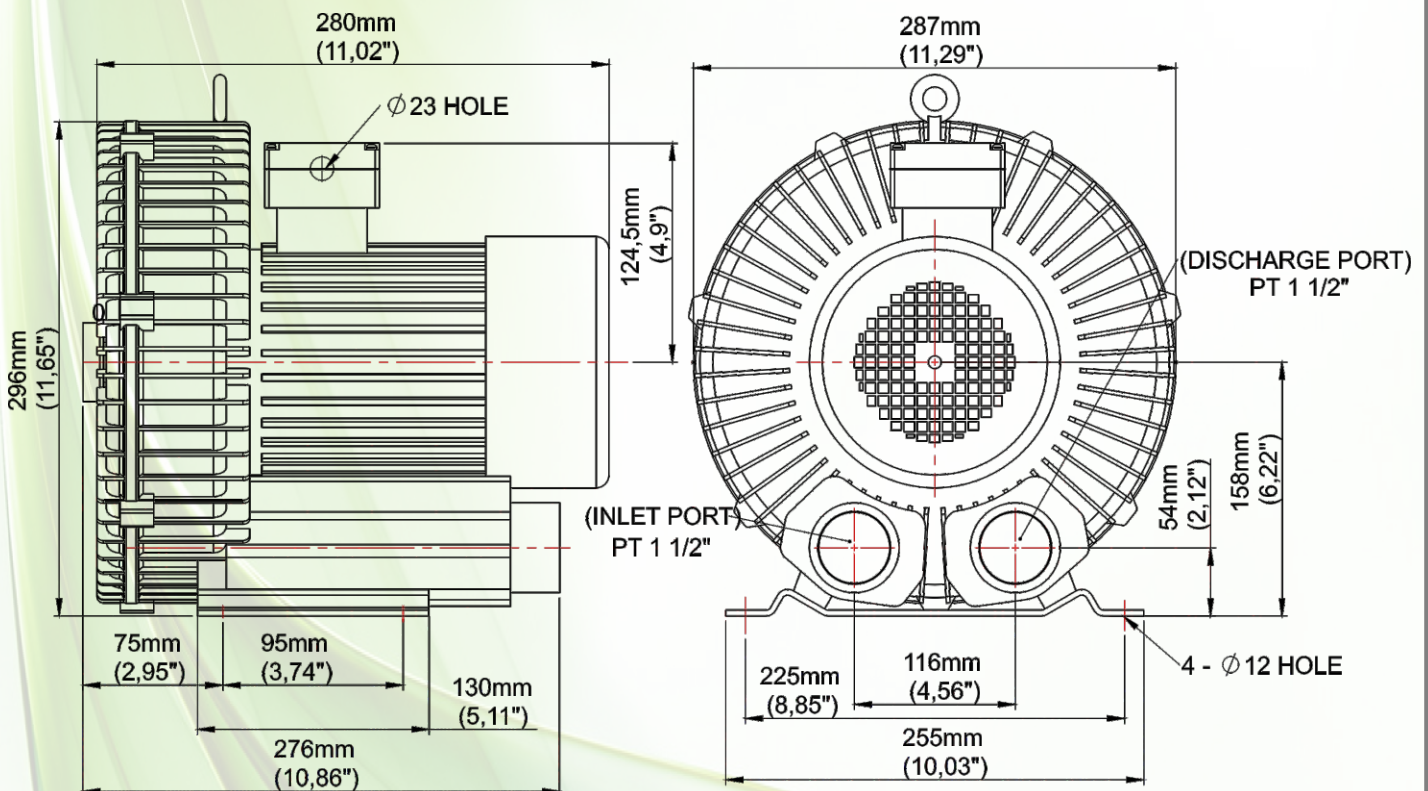


# PB-200

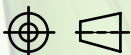
## Three Phase



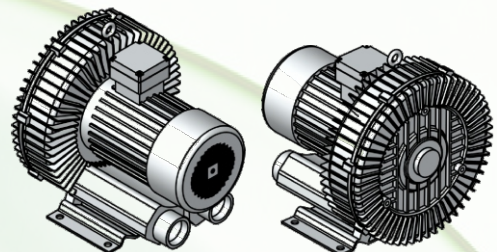
### RING BLOWER VACUUM & PRESSURE



Third Angle



- \* The allowable tolerance of dimension is  $\pm 5\text{mm}$
- \*The dimension can be changed for improvement without notice.



## ADVANTAGES

- \* Low noise 66dB
- \* Continuous, low-maintenance operation
- \* Saves space and electricity
- \* Trouble-free installation
- \* Easy replacement of parts
- \* Outboard bearings yielding longer life
- \* Dual voltage 220/460

## PRODUCT OPTIONS

- \* 1-1/2" Relief Valve (recommended)
- \* Inlet Filter (recommended)
- \* Check Valve (recommended)
- \* Silencer (recommended)
- \* Liquid filled gauge (recommended)
- \* Enclosed motor starter (recommended)
- \* Filter motor gauge (recommended)
- \* Belt-driven bare shaft blowers are available upon request (Special Order)
- \* Explosion proof motors available upon request (Special Order)

[Class 2/Groups E,F,G/Division 1 Certified]

### Single Stage Regenerative Blowers / 3 Phase (220 / 440 V) - 60Hz

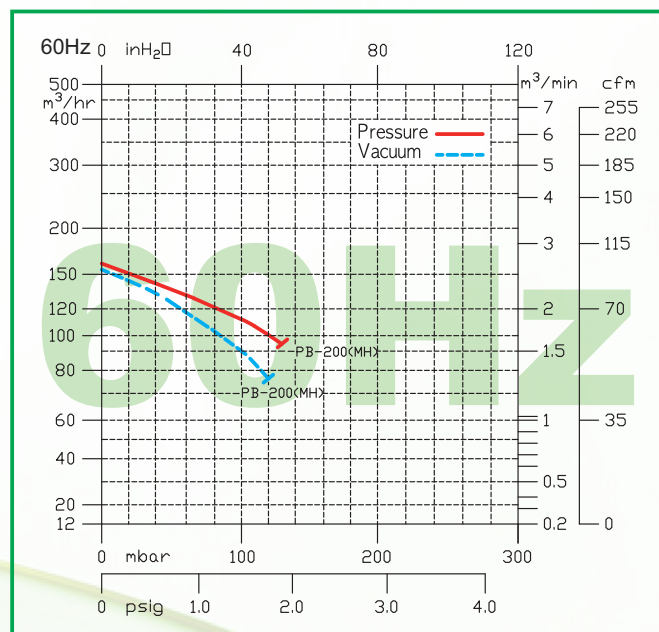
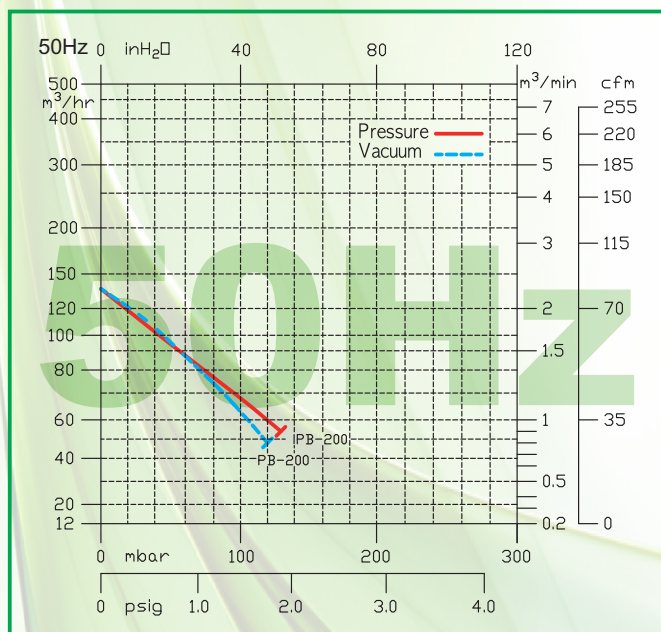
Phase	Motor (HP)	Motor (Kw)	Current (A) 220/380/440 V	Flow (cfm)	Flow (m3/min)	Flow (m3/hr)	Max Pressure (in H2O)	Max Pressure (mmAq)	Max Pressure (psig)	Max Pressure (mbar)	Max Vacuum (in H2O)	Max Vacuum (mmAq)	Max Vacuum (psig)	Max Vacuum (mbar)	Sound Level (dB/A)	Weight (lbs.)	Weight (Kg)	Diameter (INLET/OUTLET) inch
3	1,2	0,93	4.2 / 2.4 / 2.1	102	2,9	174	51	1300	1,84	127	47	1200	1,7	118	66	40	18	1 1/2

### Single Stage Regenerative Blowers / 3 Phase (220 / 440 V) - 50Hz

Phase	Motor (HP)	Motor (Kw)	Current (A) 220/380/440 V	Flow (cfm)	Flow (m3/min)	Flow (m3/hr)	Max Pressure (in H2O)	Max Pressure (mmAq)	Max Pressure (psig)	Max Pressure (mbar)	Max Vacuum (in H2O)	Max Vacuum (mmAq)	Max Vacuum (psig)	Max Vacuum (mbar)	Sound Level (dB/A)	Weight (lbs.)	Weight (Kg)	Diameter (INLET/OUTLET) inch
3	1,00	0,75	4.0 / 2.3 / 2.0	81	2,3	138	51	1300	1,84	127	47	1200	1,7	118	66	40	18	1 1/2

- \* The performances above were measured under conditions of air temperature 20°C and atmospheric pressure 1,013 mbar
- \* The allowable tolerance of the performance value is  $\pm 10\%$
- \* The sound level was measured at a distance of 1.5m with the fully open inlet and outlet ports

## PERFORMANCE CURVES



- \* The continuous operation can be made at a point below the curve, however, the continuous operation nearby the rated pressure point may cause a motor breakdown. In the case of continuous operation close to the rated pressure, it is strongly recommended to use the pressure relief valve.
- \* The allowable tolerance of the performance value is  $\pm 10\%$



All Pacific blowers are available in unassembled kits for either pressure or vacuum applications.  
These kits include:

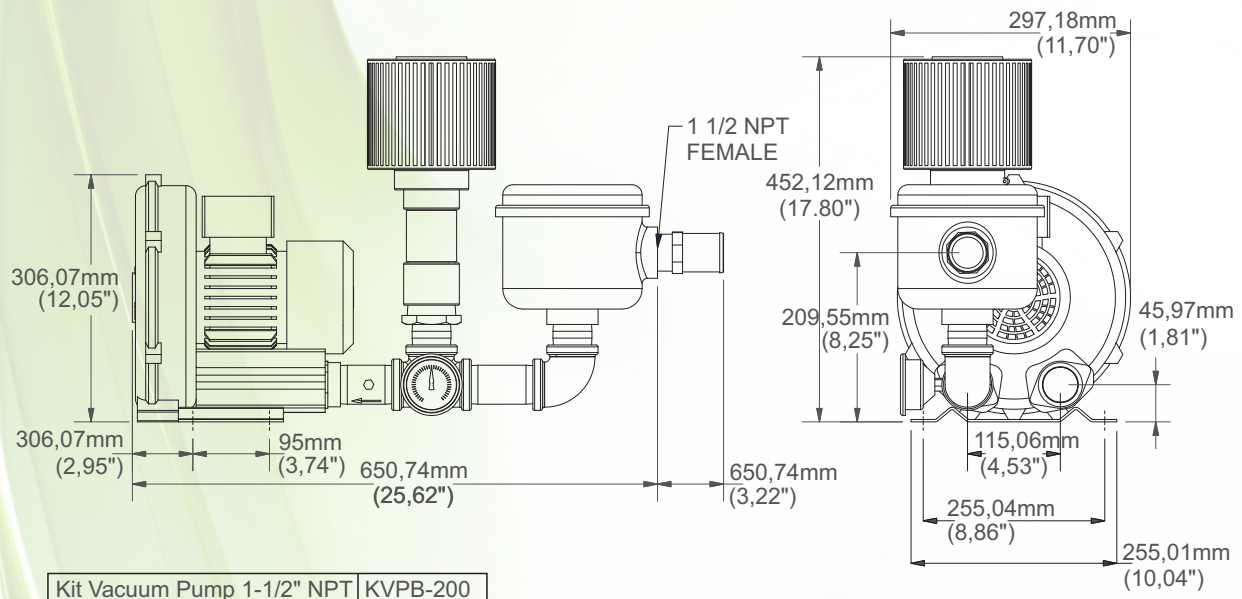
### Vacuum

- \* Silencer
- \* Inlet Filter
- \* Relief Valve
- \* Vacuum Gauge
- \* Flow Meter (optional)

### Pressure

- \* Relief Valve
- \* Check Valve
- \* Pressure Gauge
- \* Inlet Filter
- \* Flow Meter (optional)
- \* Silencer (optional)

## KVPB-200 - Vacuum Kit Drawing



## KPPB-200 - Pressure Kit Drawing

