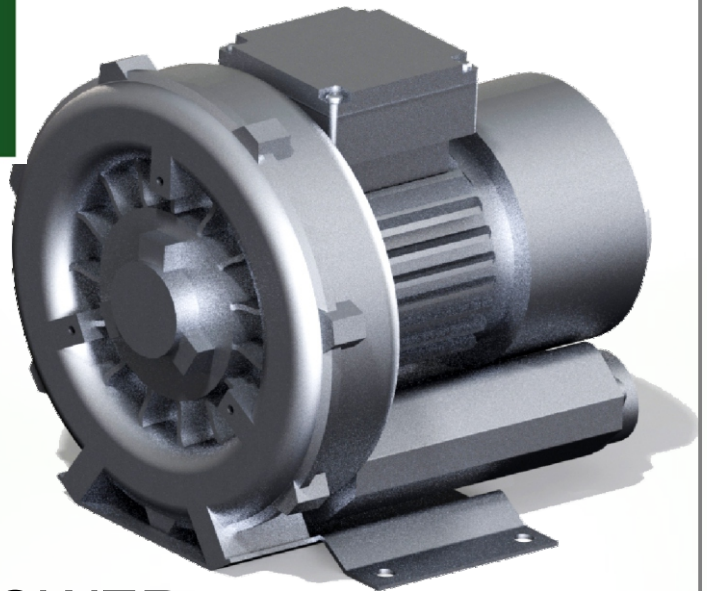


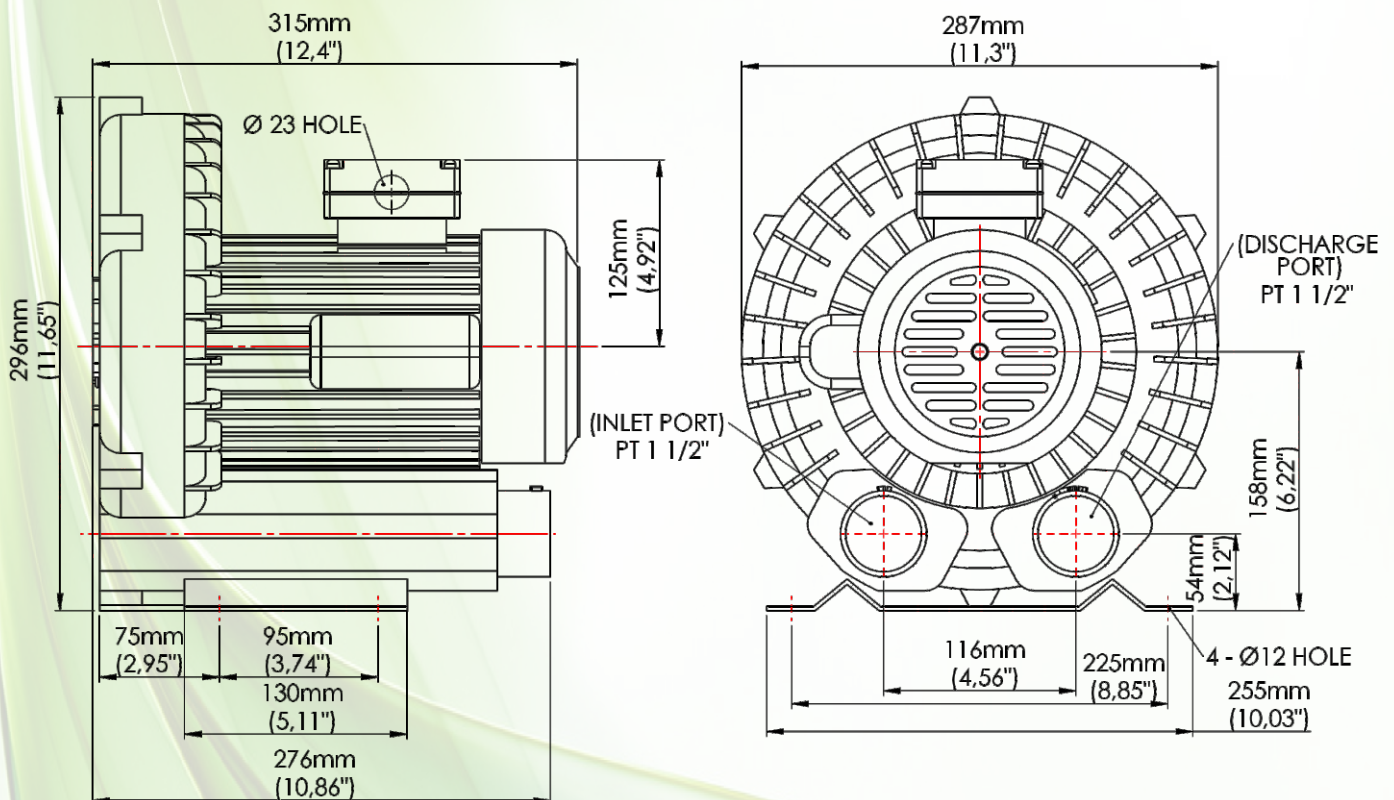


PB-201

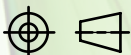
Single Phase



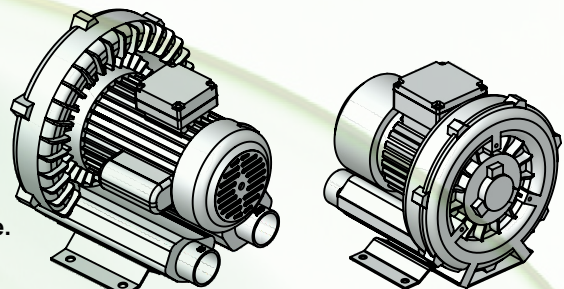
RING BLOWER VACUUM & PRESSURE



Third Angle



- * The allowable tolerance of dimension is $\pm 5\text{mm}$
- *The dimension can be changed for improvement without notice.



ADVANTAGES

- * Low noise 66dB
- * Continuous, low-maintenance operation
- * Saves space and electricity
- * Trouble-free installation
- * Easy replacement of parts
- * Outboard bearings yielding longer life
- * Dual voltage 110/230

PRODUCT OPTIONS

- * 1-1/2" Relief Valve (recommended)
- * Inlet Filter (recommended)
- * Check Valve (recommended)
- * Silencer (recommended)
- * Liquid filled gauge (recommended)
- * Enclosed motor starter (recommended)
- * Filter motor gauge (recommended)
- * Belt-driven bare shaft blowers are available upon request (Special Order)
- * Explosion proof motors available upon request (Special Order)

[Class 2/Groups E,F,G/Division 1 Certified]

Single Stage Regenerative Blowers / 1 Phase (110 / 220 V) - 60Hz

Phase	Motor (HP)	Motor (Kw)	Current (A) 110 / 220 V	Flow (cfm)	Flow (m3/min)	Flow (m3/hr)	Max Pressure (in H2O)	Max Pressure (mmAq)	Max Pressure (psig)	Max Pressure (mbar)	Max Vacuum (in H2O)	Max Vacuum (mmAq)	Max Vacuum (psig)	Max Vacuum (mbar)	Sound Level (dB/A)	Weight (lbs.)	Weight (Kg)	Diameter (INLET/OUTLET) inch
1	1,0	0,75	12,6 / 6,3	102	2,9	174	47	1200	1,7	118	44	1100	1,56	108	66	45	20	1 1/2

Single Stage Regenerative Blowers / 1 Phase (110 / 220 V) - 50Hz

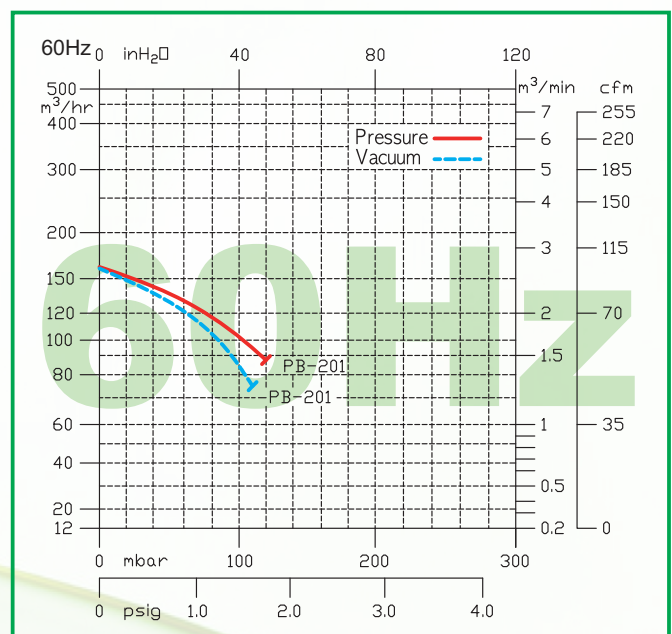
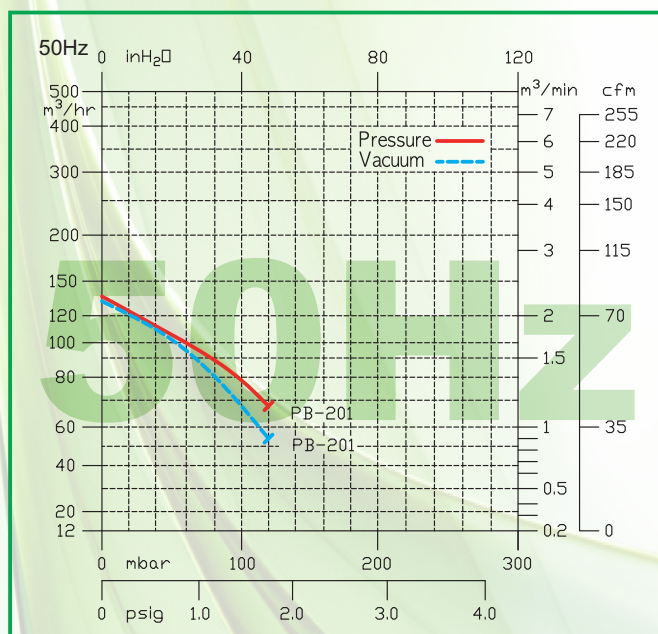
Phase	Motor (HP)	Motor (Kw)	Current (A) 110 / 220 V	Flow (cfm)	Flow (m3/min)	Flow (m3/hr)	Max Pressure (in H2O)	Max Pressure (mmAq)	Max Pressure (psig)	Max Pressure (mbar)	Max Vacuum (in H2O)	Max Vacuum (mmAq)	Max Vacuum (psig)	Max Vacuum (mbar)	Sound Level (dB/A)	Weight (lbs.)	Weight (Kg)	Diameter (INLET/OUTLET) inch
1	0,85	0,63	10,4 / 5,2	81	2,3	138	47	1200	1,7	118	47	1200	1,7	118	66	45	20	1 1/2

* The performances above were measured under conditions of air temperature 20°C and atmospheric pressure 1,013 mbar

* The allowable tolerance of the performance value is $\pm 10\%$

* The sound level was measured at a distance of 1.5m with the fully open inlet and outlet ports

PERFORMANCE CURVES



* The continuous operation can be made at a point below the curve, however, the continuous operation nearby the rated pressure point may cause a motor breakdown. In the case of continuous operation close to the rated pressure, it is strongly recommended to use the pressure relief valve.

* The allowable tolerance of the performance value is $\pm 10\%$

All Pacific blowers are available in unassembled kits for either pressure or vacuum applications.
These kits include:

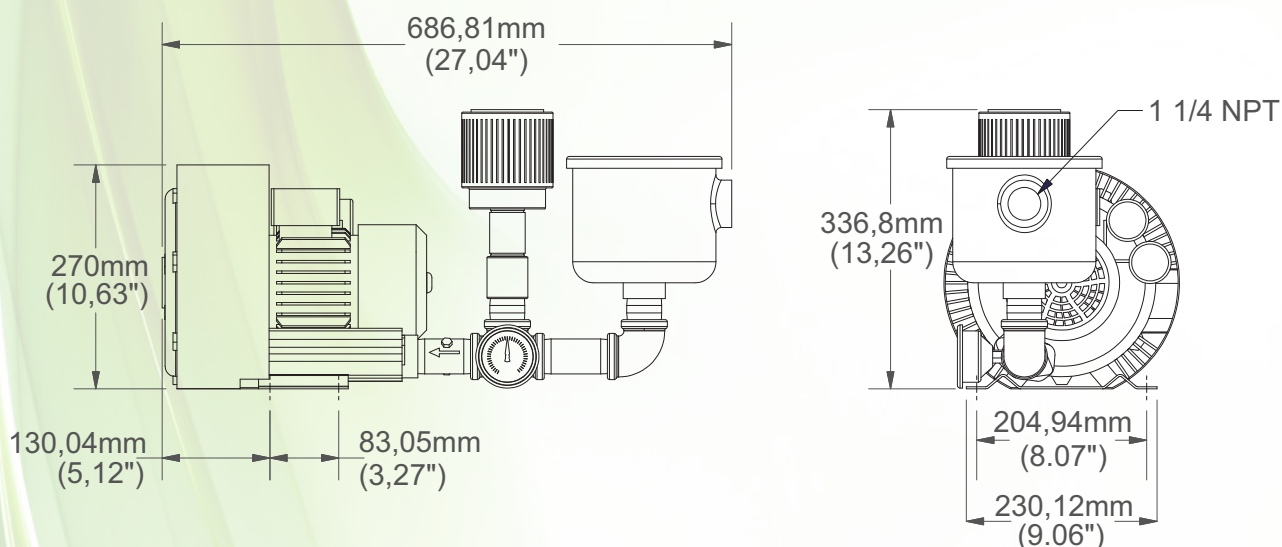
Vacuum

- * Silencer
- * Inlet Filter
- * Relief Valve
- * Vacuum Gauge
- * Flow Meter (optional)

Pressure

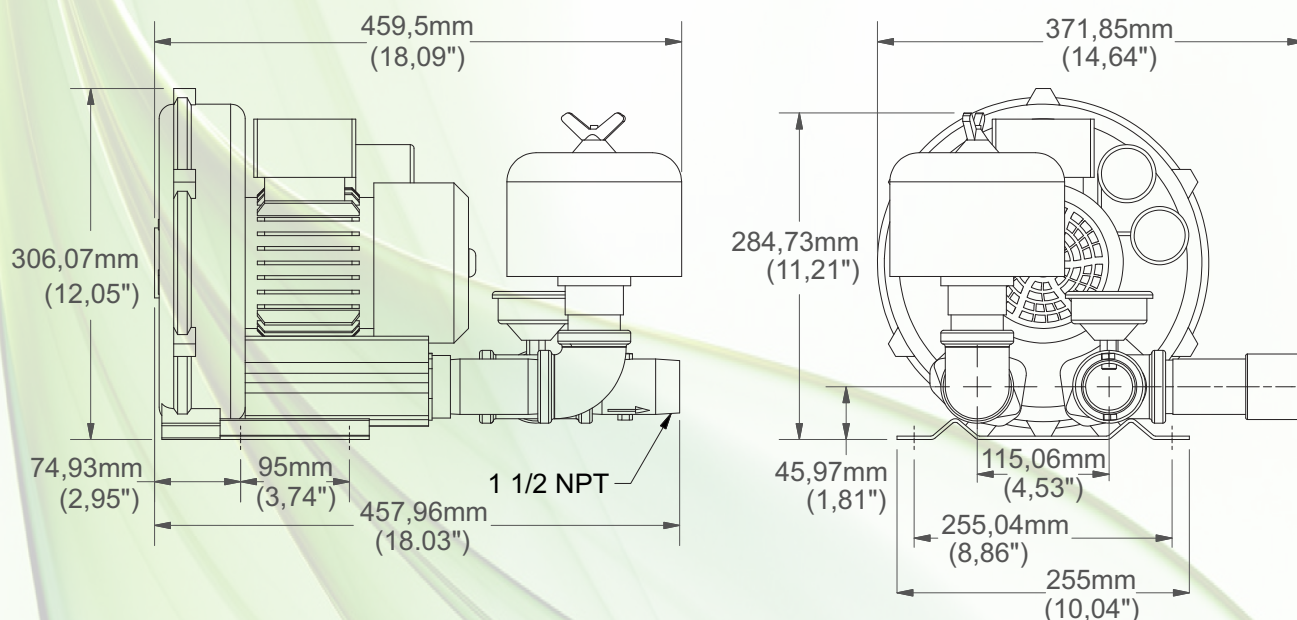
- * Relief Valve
- * Check Valve
- * Pressure Gauge
- * Inlet Filter
- * Flow Meter (optional)
- * Silencer (optional)

KVPB-201 - Vacuum Kit Drawing



Kit Vacuum Pump 1-1/2" NPT KVPB-201

KPPB-201 - Pressure Kit Drawing



Kit Pressure Pump 1-1/2" NPT KPPB-201